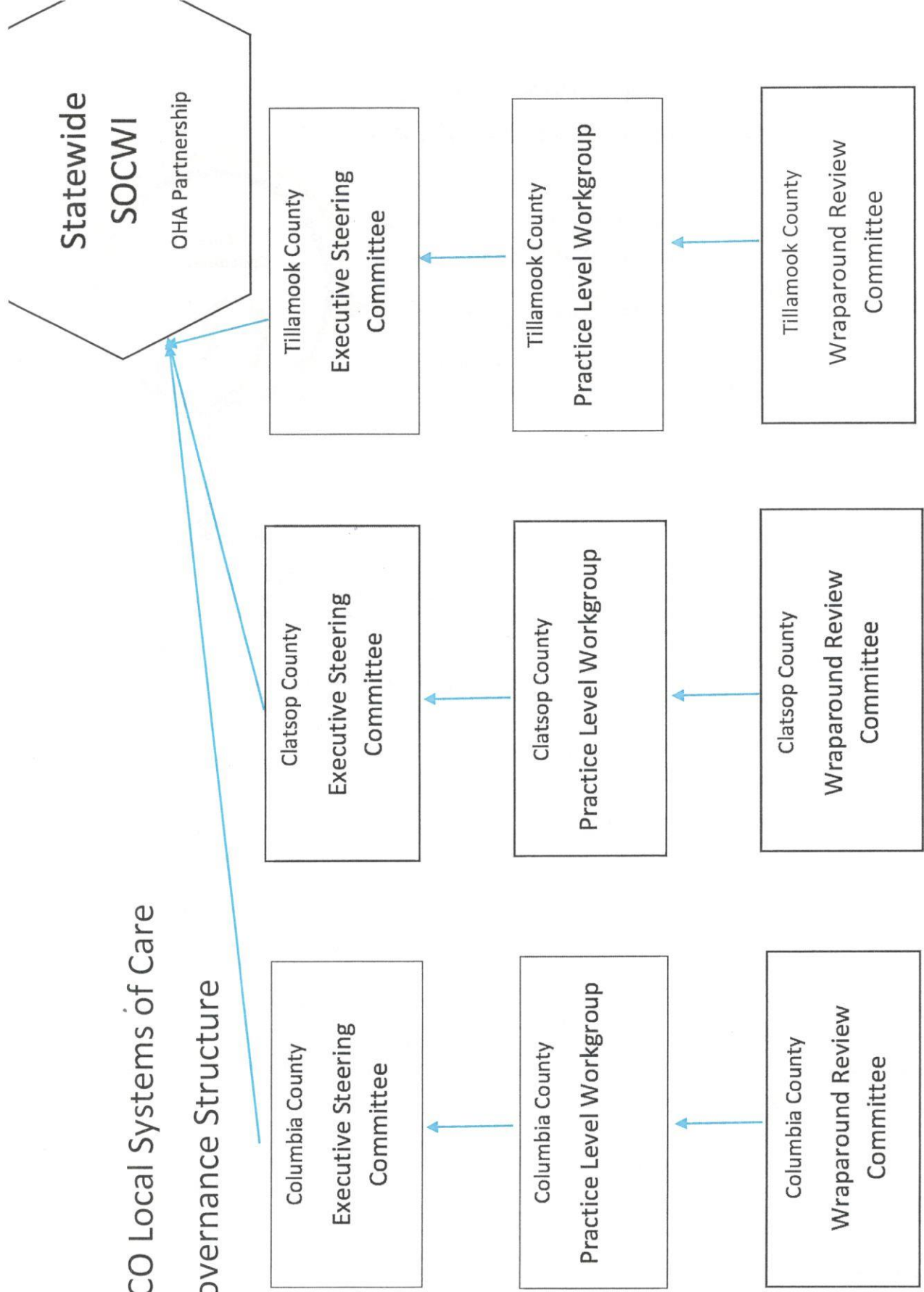
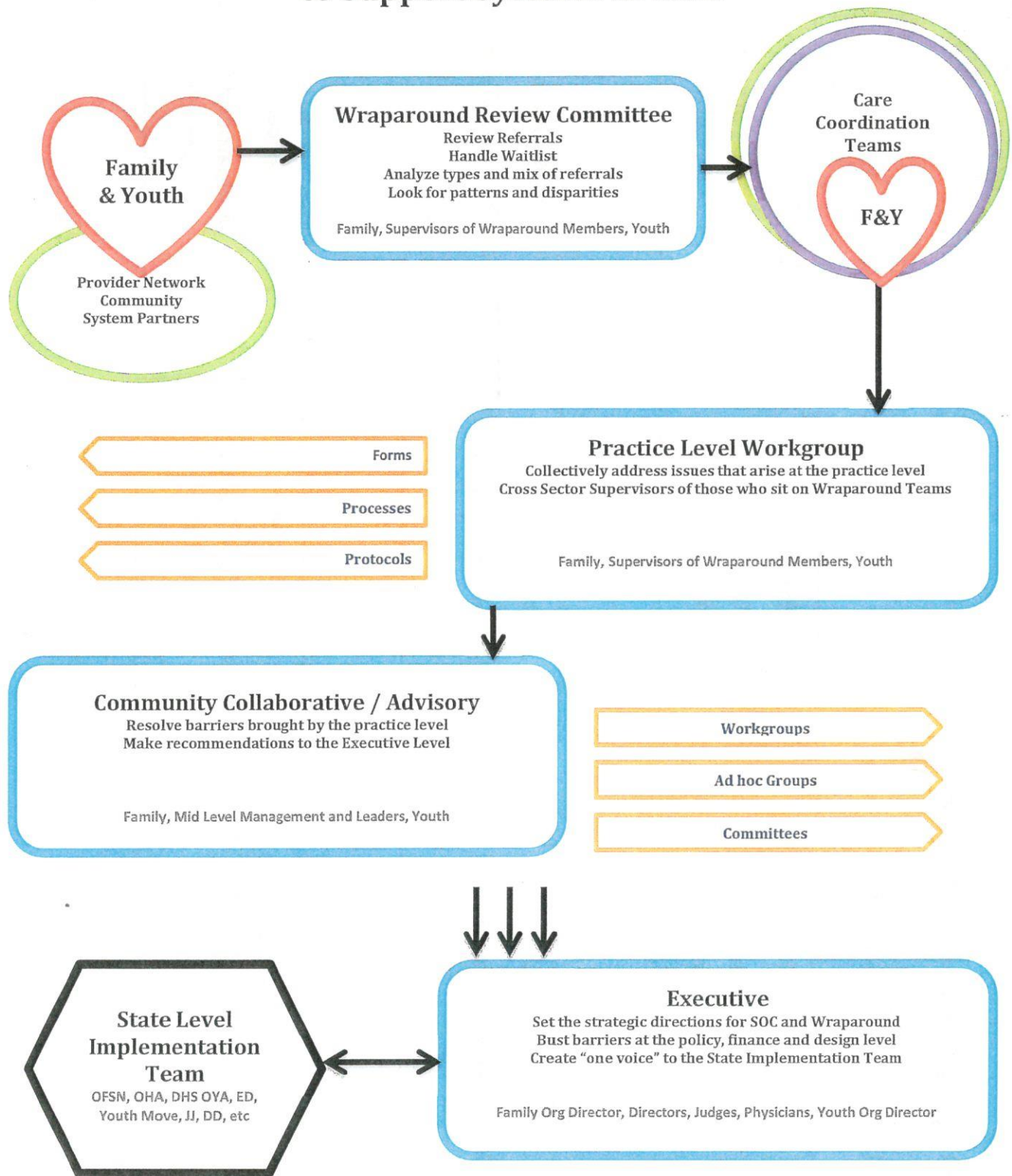


CPCCO Local Systems of Care Governance Structure



Collaborative Structures to Support Systems of Care



Mandates: 1) Family and youth have membership at all levels of the collaborative structure. 2) Names of structures are not system-specific. 3) Representation is cross-sector. 4) Each level agrees to adhere to the Systems of Care values and principles. 5) Multi-tier and inclusive.